

## Eclat Weave K1104

KnollTextiles

KnollTextiles Archival Collection  
Designed by Anni Albers, 1974

**Primary Use**  
Upholstery

**Content**  
Rayon 37%  
Cotton 34%  
Polyester 29%

**Width**  
54 inches

**High Performance**  
60,000+ double rubs  
Nanotex® stain and spill  
resistant

**Environmental**  
Clean Air SILVER



K1104/9 Forest

made in  
theUSA

NANOTEX®  
POWERED BY CRYPTON



K1104/1 Tangerine



K1104/2 Scarlet



K1104/3 Pine



K1104/4 Silver



K1104/7 Hickory



K1104/8 Ocean



K1104/9 Forest



K1104/6 Black



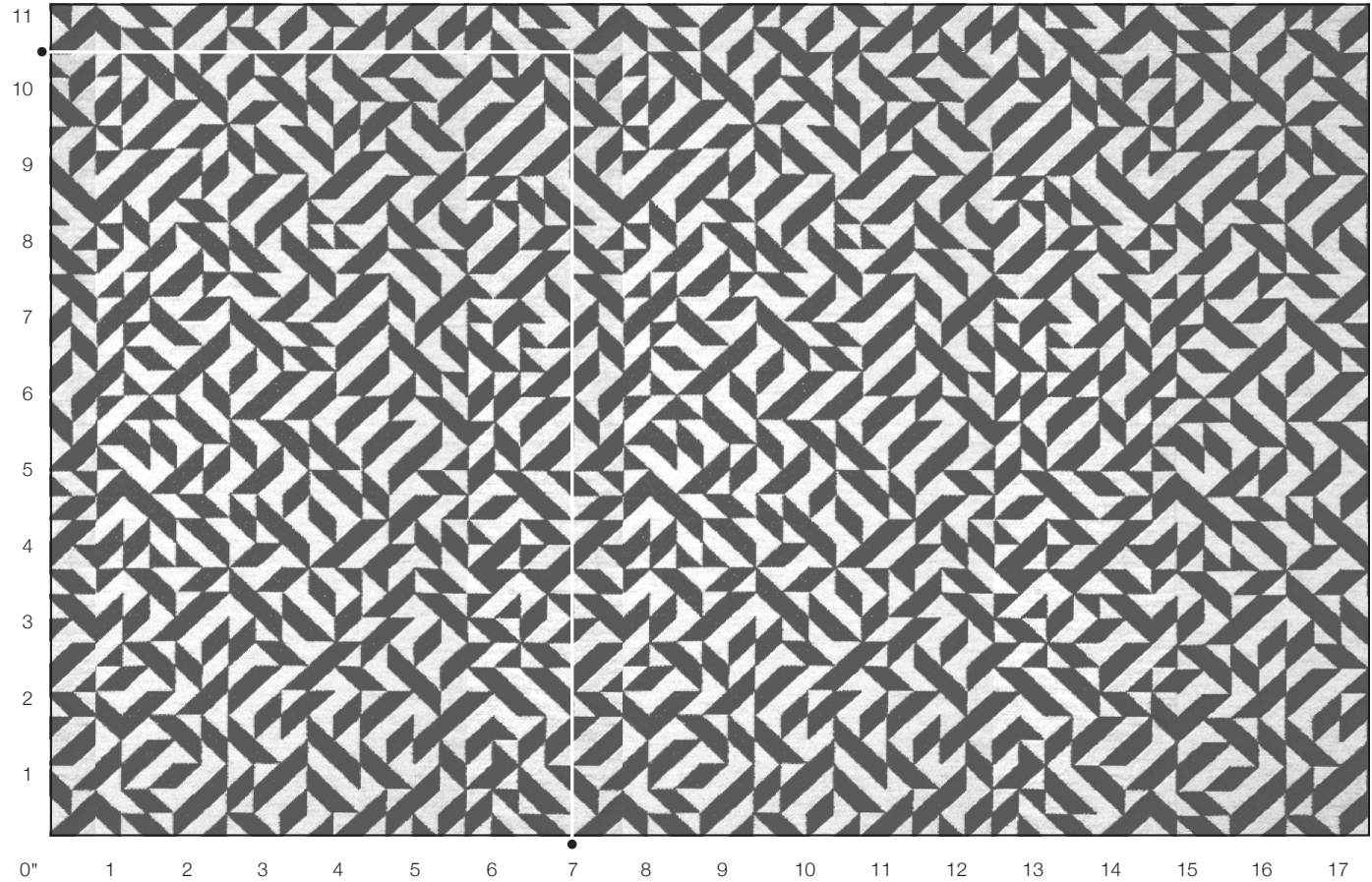
<b>Name</b>	Eclat Weave KnollTextiles Archival Collection Designed by Anni Albers, 1974
<b>Style Number</b>	K1104
<b>Primary Use</b>	Upholstery
<b>Content</b>	Rayon 37% Cotton 34% Polyester 29%
<b>Finish</b>	Nanotex® stain and spill resistant
<b>Weight</b>	17.5 oz. per linear yard
<b>Width</b>	54 inches
<b>Repeat</b>	10½ inches vertical, 7 inches horizontal (approx.)
<b>Flame Resistance</b>	NFPA 260 (UFAC Class 1)
<b>Lightfastness</b>	AATCC 16E, 40 hours, Class 5
<b>Abrasion</b>	60,000+ double rubs, Wyzenbeek method
<b>Custom</b>	Some custom colors available with a minimum of 100 yards. Additional charges or lead times may be required.
<b>Environmental</b>	This fabric is certified Clean Air SILVER for low VOC emissions and may contribute to LEED® certification.



Anni Albers was a student of Paul Klee at the Bauhaus before emigrating to the United States with her husband, painter Joseph Albers. As an expert weaver and printmaker, she began a three decade collection with KnollTextiles in 1951. KnollTextiles reintroduction of Eclat, designed in 1974, is in collaboration with the Joseph and Anni Albers Foundation.

NANOTEX  
 POWERED BY CRYPTON

GREENGUARD  
 CLEAN AIR SILVER



Eclat Weave K1104  
**Repeat:** 10 ½ inches vertical, 7 inches horizontal (approx.)